



Kingfisher

SPORT

Part of the LUCECO group of companies

Datasheet

Amnis Flood



Specification Text

The luminaire shall be manufactured from high pressure die-cast aluminium. It shall have an LED efficacy of up to 123 luminaire lm/W and will be capable of producing up to 111,000 luminaire lumens at 4000K with a CRI >70. It shall have a wide and narrow short throw optics optic and is rated at IP66 and IK08.

For IDA Accredited Specification add: The luminaire shall produce a CCT of 2700K with a fixed bracket mount.



Key Features

- 900W
- 88,000 - 111,000 Luminaire Lumens
- Efficacy up to 123lm/W
- 2700K, 4000K
- CRI >70, CRI >80, CRI >90
- Lifetime >100,000hr
- Asymmetrical
- Driver options
- Marine grade paint



Specification

Weight:

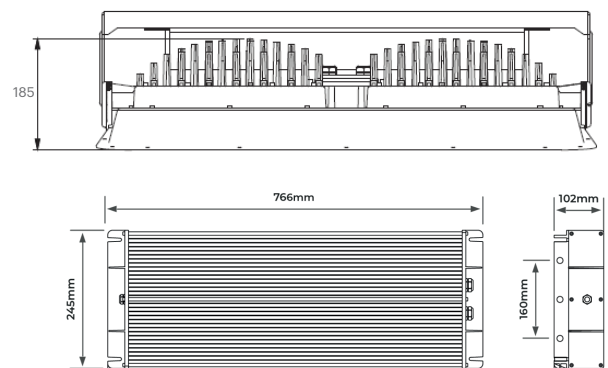
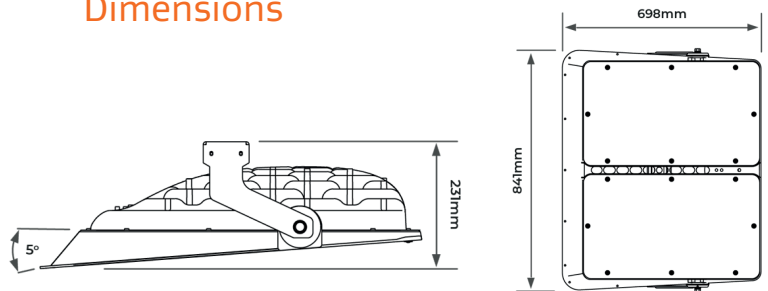
Fitting:	27.5 kg
Driver:	13.0 kg
Fitting with integral driver:	32.5 kg

Windage: 0.19m²

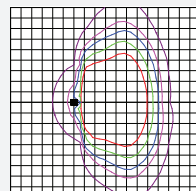
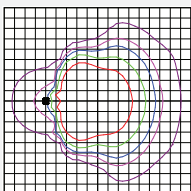
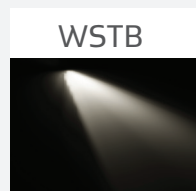
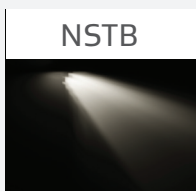
Material: Die-cast Aluminium

Paint Finish: Marine Grade
Powder Coated
Anthracite Grey

Dimensions



Optics



All measurements in mm

Code	Power	Luminaire Lumens	Optic	CCT(K)	IP	IK	Weight (kg)		Paint Finish
Integral driver									
LAF111ID4WSTB740	900W	111000	Wide Short Throw	4000	IP66	IK08	32.5	-	Anthracite Grey
LAF188ID4NSTB740	900W	88000	Narrow Short Throw	4000	IP66	IK08	32.5	-	Anthracite Grey



Accessories / Options

- External & integral shields
- Control options
- Dimmable options
- Colour Temperature options

Mounting Options

- Bracket mounted

