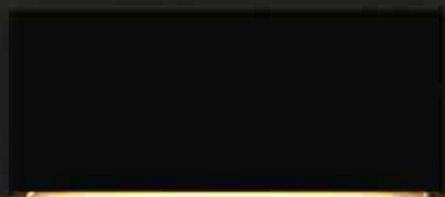




**Kingfisher**  
Lighting

Semita **Urban**

[kingfisherlighting.com](http://kingfisherlighting.com)



STREET • AMENITY • ARCHITECTURAL • AREA • SPORTS • HIGH MAST

PART OF THE **LUCECO**<sub>plc</sub> GROUP OF COMPANIES

# Semita Urban

Designed and engineered in our R&D facility the UK, Semita Urban is a contemporary, slimline wallpack that packs a big punch! Mirroring the performance of the Quarto 2.0, Semita Urban offers a range of optical distributions to perfectly suit a range of scenarios. Each luminaire is equipped with an optional comfort diffuser to give a softer output.

## Street Optic

This optic is the perfect match for access roads and perimeters without having to use more conventional, and often bulky road lanterns on the building.

## Pathway Optic

Great for pathways located close to building. This optic is designed specifically to improve the spacing between fittings.

## Flood Optics

This optic is perfect for any schemes where you may need a good amount of forward throw. E.g. Lighting a car park located a short distance away from the building.

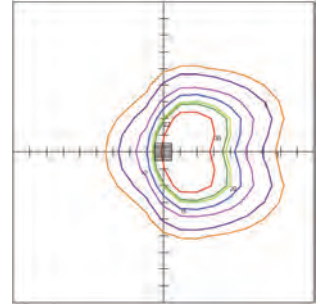
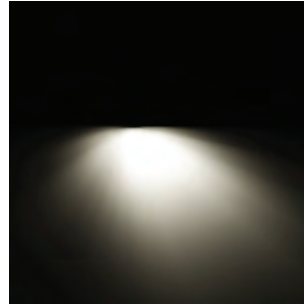
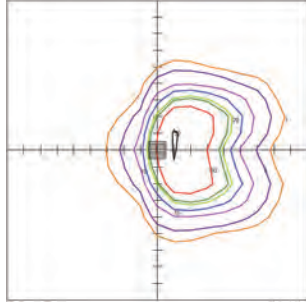
This versatile wall mounted fitting is also available with photocell, emergency and fully control compatible technology.



# Distribution

## Flood Optic

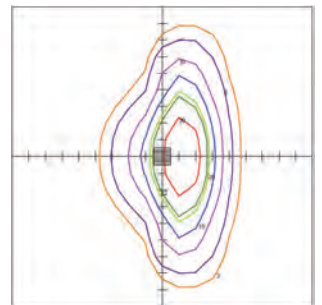
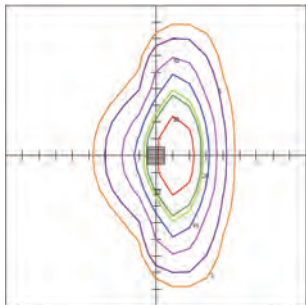
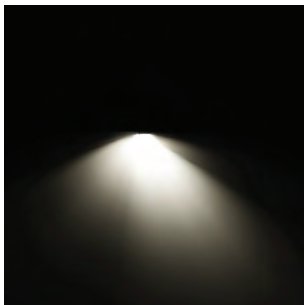
This optic is perfect for any schemes you may need a good amount of forward throw. E.g. Lighting a car park located a short distance away from the building.



with Comfort Diffuser

## Cycle Path Optic

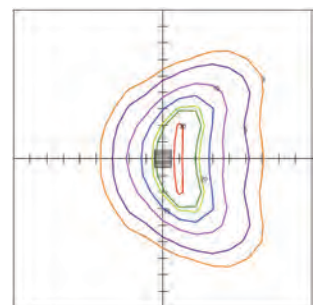
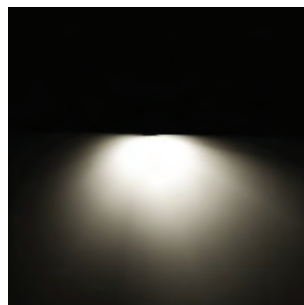
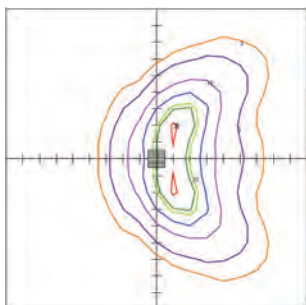
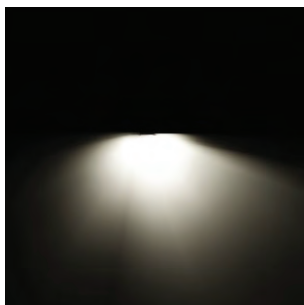
Great for pathways located close to building. This optic is designed specifically to improve the spacing between fittings.



with Comfort Diffuser

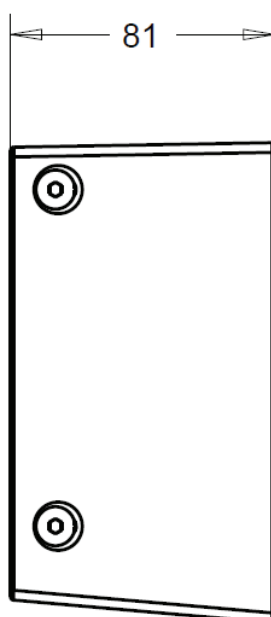
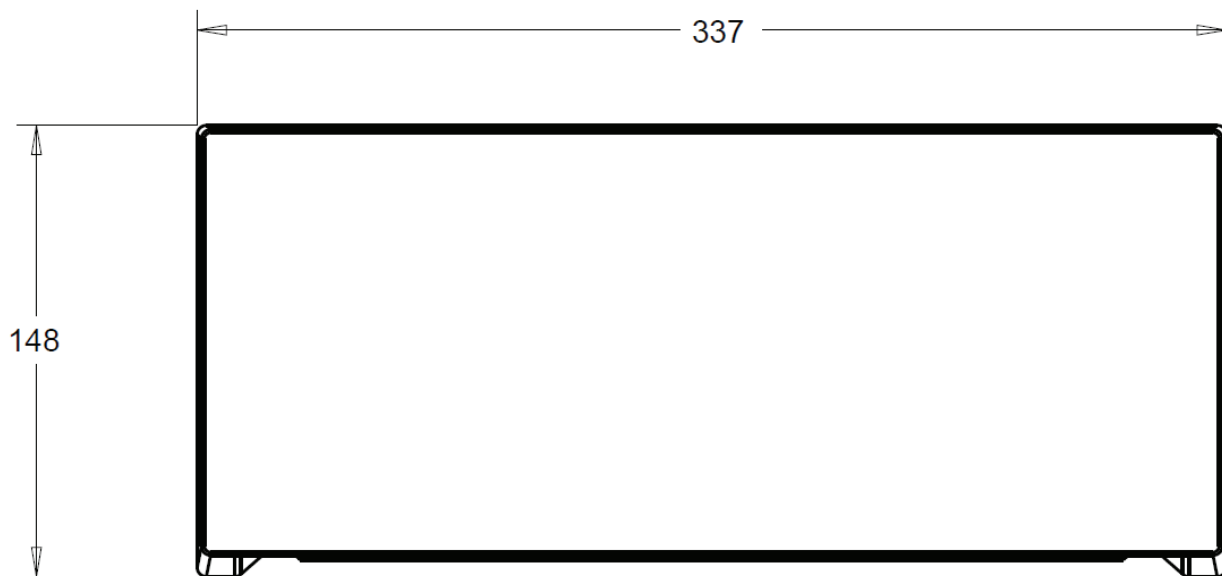
## Street Optic

This optic is the perfect match for access roads and perimeters without having to use more conventional, and often bulky road lanterns on the building.



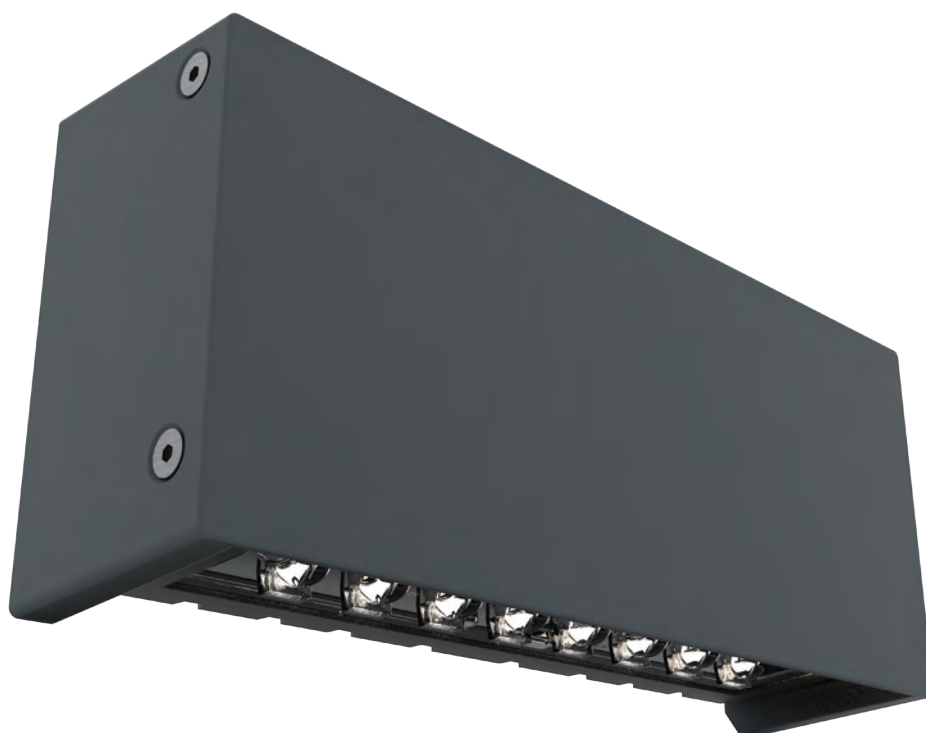
with Comfort Diffuser

# Dimensions



All measurements in mm

# Semita Urban



# Semita Urban



Semita Urban Cycle Optic



Semita Urban with Comfort Diffuser





# Kingfisher Lighting

## Datasheet

### SEMITA Urban



#### Specification Text

The luminaire shall be manufactured from high pressure die-cast aluminium. It shall have an LED efficacy of up to 145.1 luminaire lm/W and will be capable of producing up to 1,611 luminaire lumens at 4000K with a CRI >70. It shall have an asymmetric forward throw optic and is rated at IP66 and IK10.

#### Specification

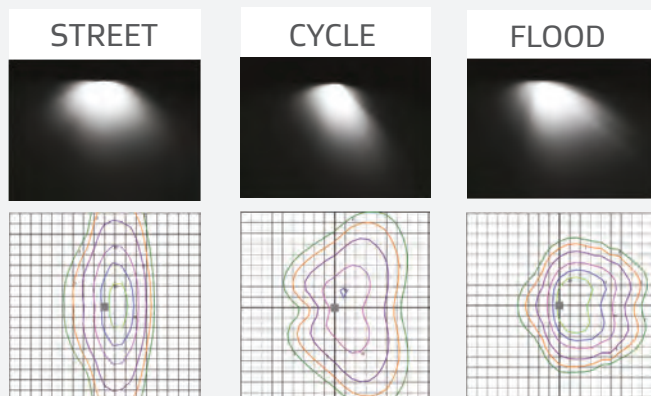
Weight: 2.42 kg  
Material: Die-cast Aluminium  
Paint Finish: Anthracite Grey

#### Key Features

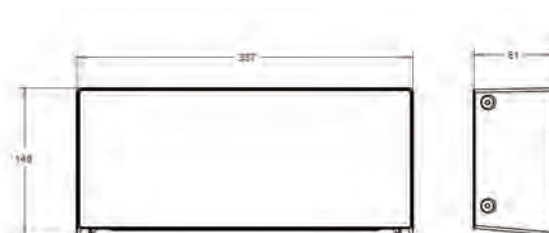
- 6W - 11W
- 812 - 1,611 Luminaire Lumens
- Efficacy up to 145.1 lm/W
- 4000K, CRI >70
- Lifetime >100,000hr
- Asymmetrical
- Driver included
- Dimming options



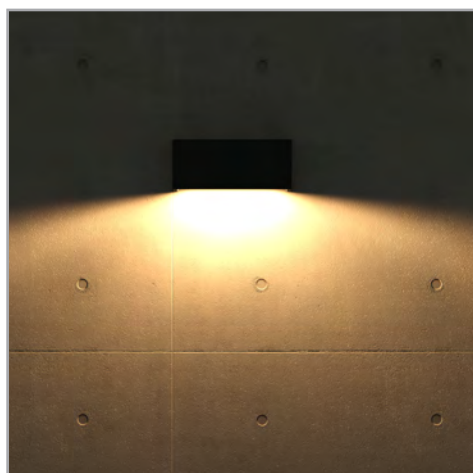
#### Optics



#### Dimensions



Code	Power	Light Source	Luminaire Lumens	Optic	CCT(K)	IP	IK	Weight (kg)	Paint Finish
SEMUFL08D	6W	LED	812	Flood Light Optic (FL)	4000	IP66	IK10	2.4	Anthracite Grey
SEMUFL15D	11W	LED	1611		4000	IP66	IK10	2.4	Anthracite Grey
SEMUOC08D	6W	LED	802	Path optic (OC)	4000	IP66	IK10	2.4	Anthracite Grey
SEMUOC15D	11W	LED	1570		4000	IP66	IK10	2.4	Anthracite Grey
SEMUST08D	6W	LED	783	Street Optic (ST)	4000	IP66	IK10	2.4	Anthracite Grey
SEMUST15D	11W	LED	1496		4000	IP66	IK10	2.4	Anthracite Grey



### Accessories / Options

- Comfort diffuser
- Control options
- Dimmable options
- Colour Temperature options

### Mounting Options

- Wall mounted

